

# How BIM is used in the construction industry – prospects for use in nuclear decommissioning

Dag Fjeld Edvardsen, Catenda  
[dag.fjeld.edvardsen@catenda.no](mailto:dag.fjeld.edvardsen@catenda.no)





BRANNHIS



TILFLUKTSHOM

H2

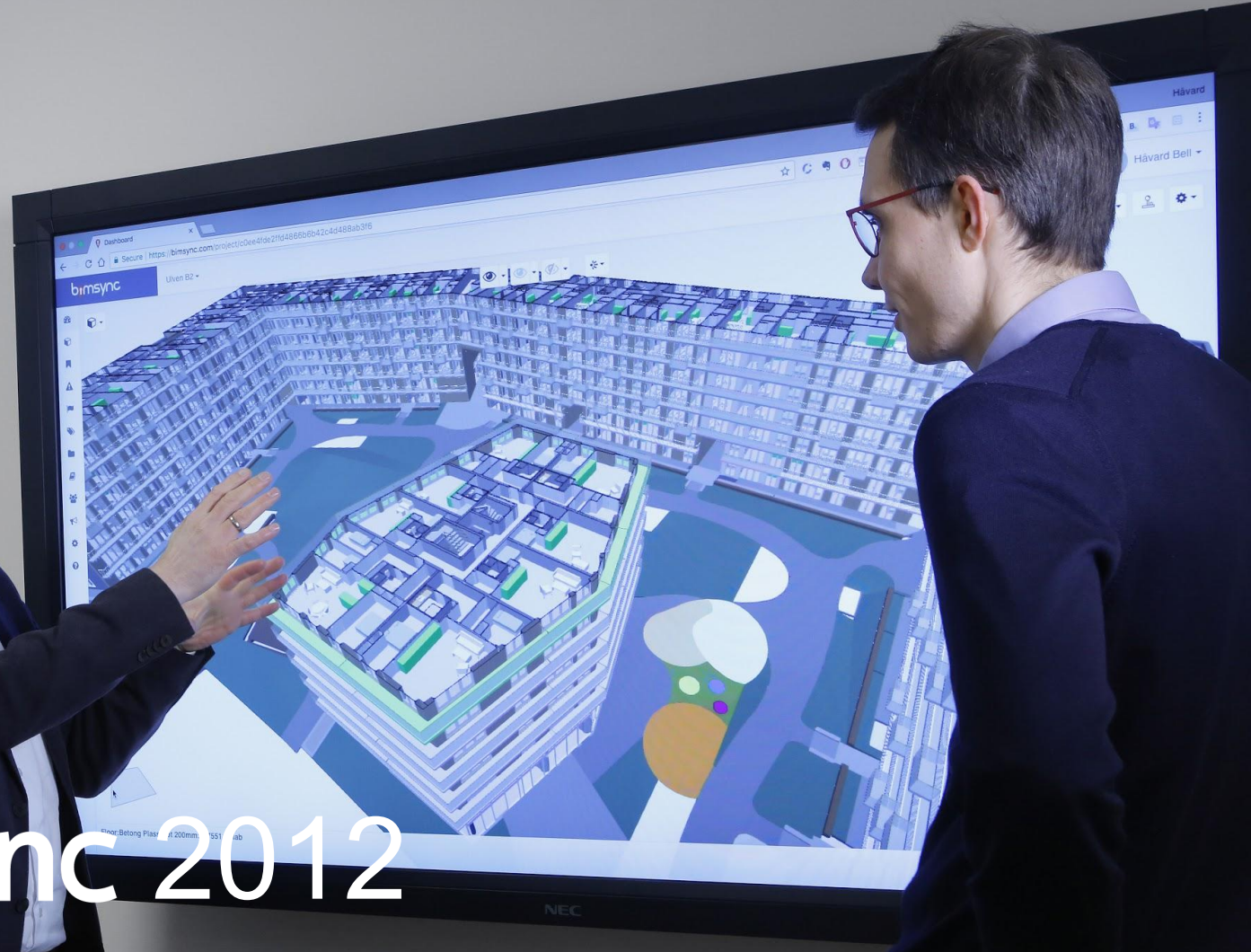
← Varemottak/utlevering

← Blankettlager/rekvisita

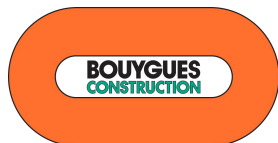
Founded in 2009



 **Bimsync 2012**

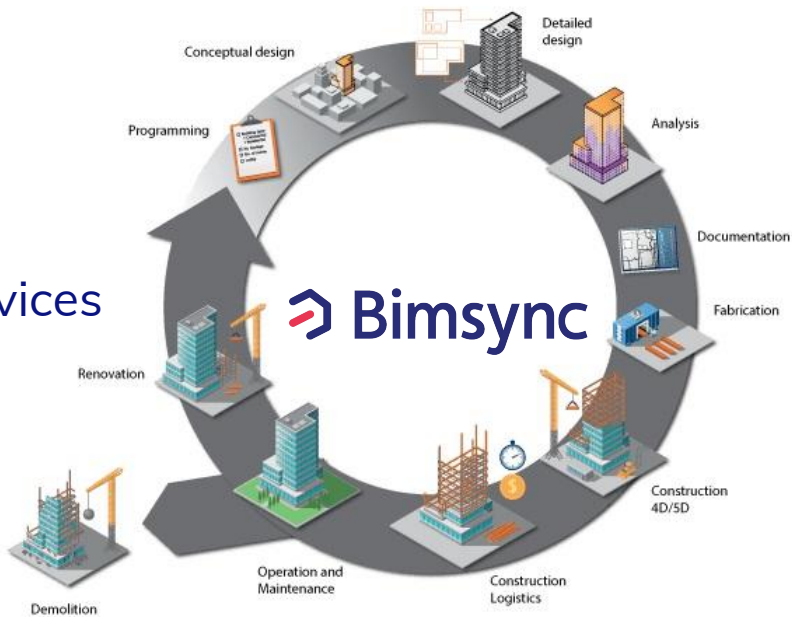


# References

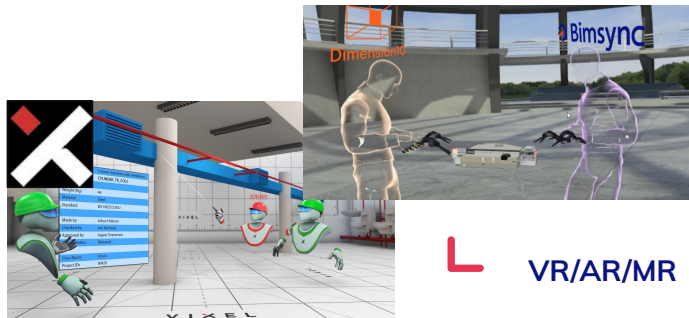


# 2 products

- **Bimsync® Arena**
  - Collaborate and coordinate
- **Bimsync® Boost**
  - Use our API to build new BIM services on top of our platform



# The Bimsync Ecosystem



VR/AR/MR



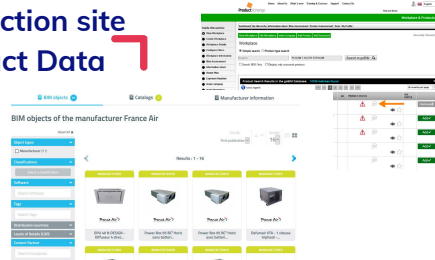
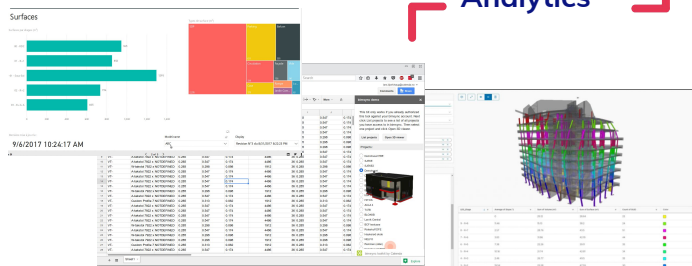
Bimsync



Cost, FM  
& Point Clouds

Analytics

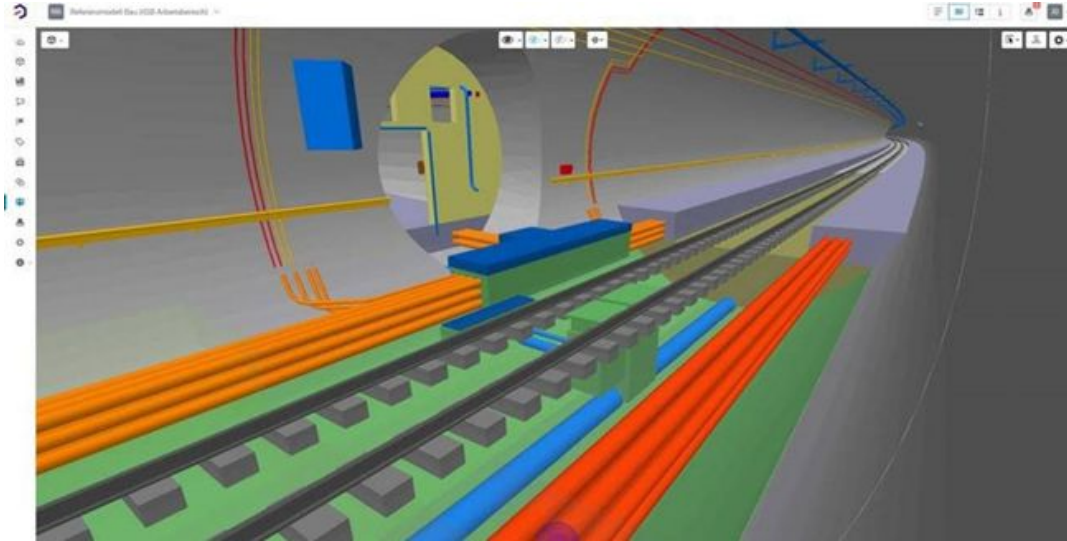
Construction site  
& Product Data



Bimsync is already integrated with several other 3rd party applications and systems.

 Catenda

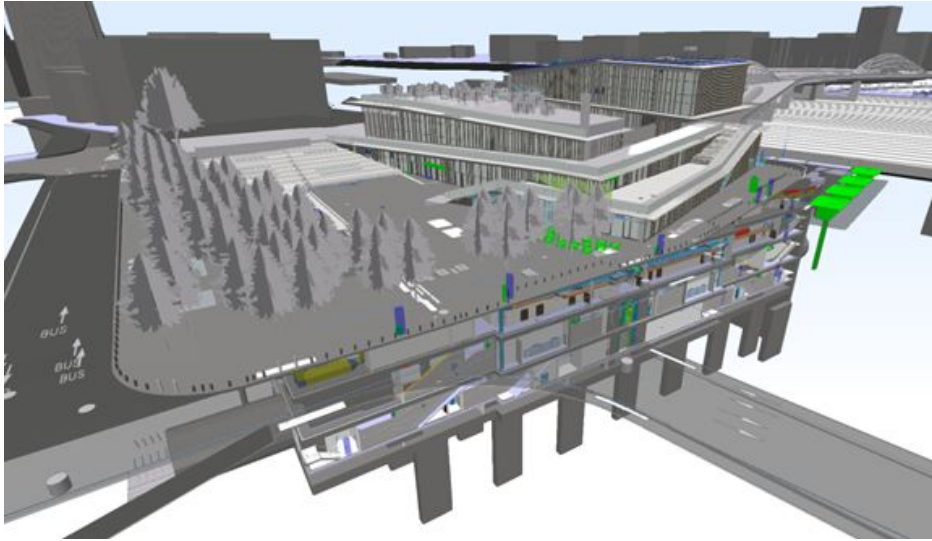
# Bimsync Arena Case Studies



SBB - Brüttenertunnel - Switzerland



# Bimsync Arena Case Studies



Grand Paris Express - Metro Line 16 - France

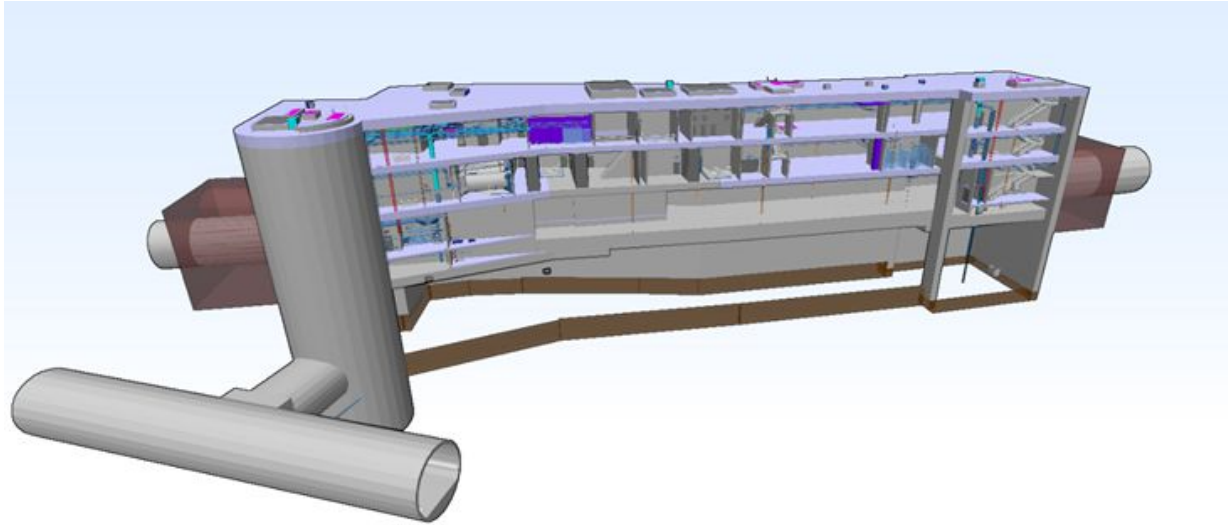


# Bimsync Arena Case Studies



LRT Marseille - France

# Bimsync Arena Case Studies



Metro Station Rennes - France

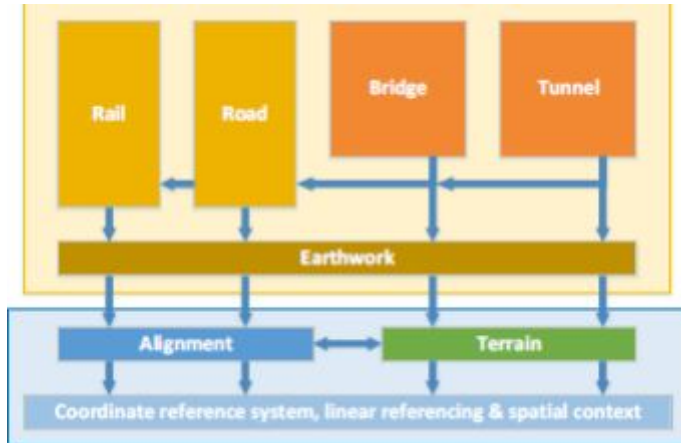


LiveDecom - nuclear decommissioning

## The building is not enough

Today IFC is for buildings, soon Infrastructure too.

Plants next?





# What is BIM?

- BIM = Building Information Model(ing)
- More than 3D models
- Objects that can contain both geometry and information
- Buildings and building is very complex, object orientation can make working with in a structured way significantly easier
- Paper -> DWG / PDF -> RVT / IFC

# What is open BIM

- open BIM is in practice IFC from **buildingSMART International (bsi)**
- bsi also promotes other standards such as bsDD, IDM, mvdXML and BCF
  - respectively: **semantic terms**, **information contracts**, **model views** and **fancy TODO-lists**
- We think of these as a powerful package, for us **openBIM is not only about IFC**

# Related technology

- GTIN
- Product libraries
- Interactive visualization
- And much more
- BIM is the glue



E-mail +  
attachments =  
anti-structure.

BIM =  
structure. When  
done right and  
with the related  
workflows.

## On Paradisalléen, e-mail was dropped in favor of BIM

Better control and fewer errors were the goal when Bimsync was chosen as the communication and planning tool for the Paradisalléen project in Bergen. Email was dropped almost completely.



Facebook



Twitter



LinkedIn

Right from the start-up phase, it was decided that a cloud-based BIM collaboration tool (Bimsync) should be used as much as possible.

- All RIB engineering has been carried out in BIM. Exchange of the design documentation to subcontractors has been done through IFC files and exchange of original files. Subcontractors have largely used Tekla Structures. We have probably been very "strict" with the other players, and demanded that Bimsync be used for the best possible overview and efficiency. Unfortunately, many people still find it much easier to send an e-mail, instead of creating a case in a system. But we have very good experiences with linking the project's system with our own case processing system; Mantis, because both are online. Here, cases can easily be linked together, says civil engineer Andreas Zieritz at NODE consulting engineers.

### BIM creates overview and traceability

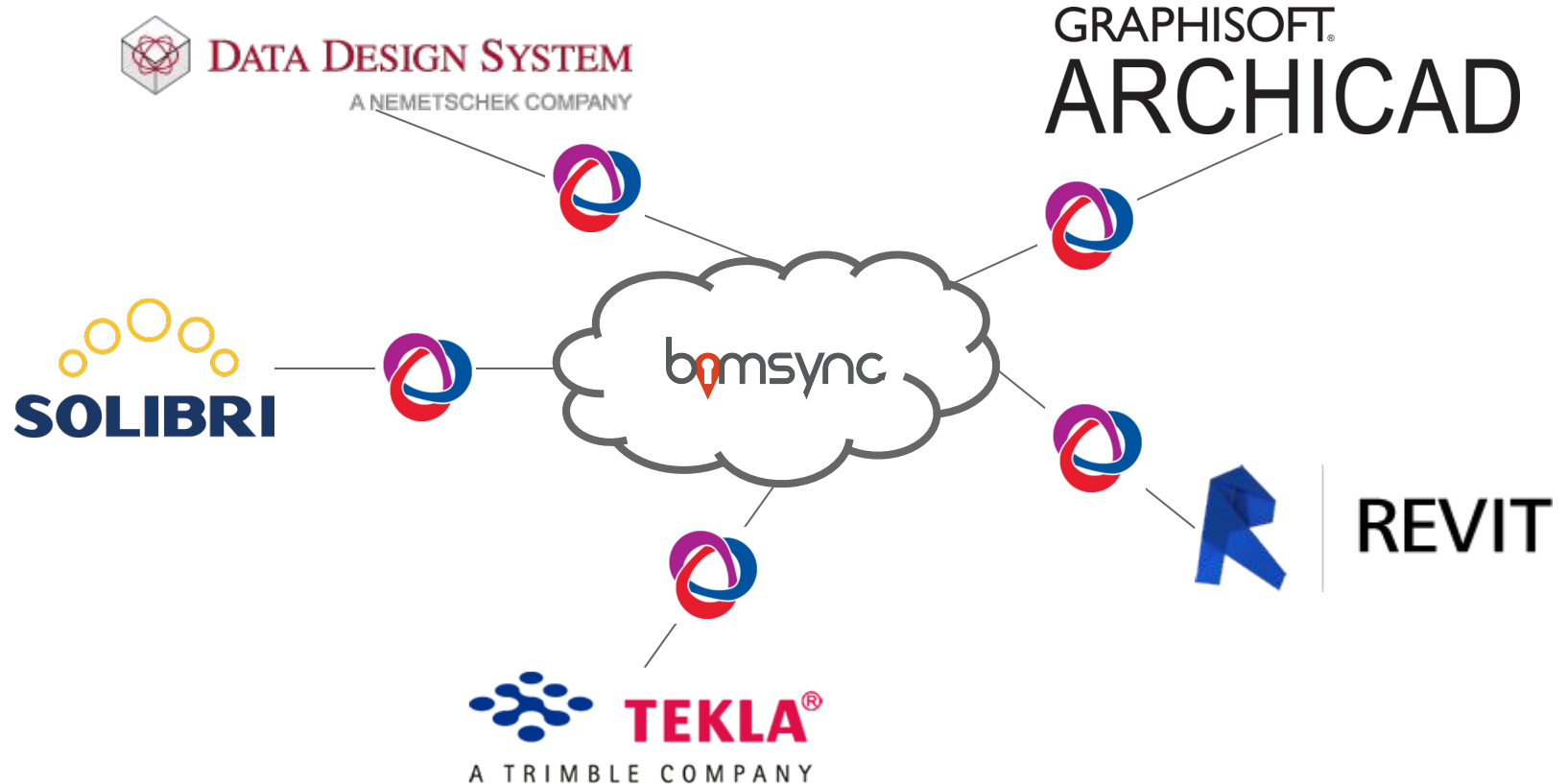
The company has been consulting engineers in construction engineering, building physics and geotechnics (RIB, RIBfy and RIG). They have also supplied complete production drawings, including cutting drawings for steel structures, prefabricated columns and beams. Zieritz emphasizes that a collaboration tool like this makes it especially easy to avoid mistakes and misunderstandings.





- Especially when questions arise afterwards about why some cases were done in one way or another, such systems are a great



Seamless issue management





Norsk Standard  
NS 3451:2009



UTFORING FURU 2100X176X18  
DØRBLAD ID 200/GW4 9X21 HVIT GL  
EIK 09X020 FEIELIST LAK  
FUGEM SIKAFLEX 15LM BET.GRÅ P.

543.101 Innvendig

543.888

524.721

534.141

743.110

0102.044 M\_Upper  
Cabinet-Single Door-  
Wall: 610mm

Open in client

Empty fields hidden

Copy Link to Clipboard


Settings

Properties

Occurrences

Occurrences in room template

Images



PDF

X

Saker

1 Åpen

0 Lukkede



buildingSMART  
Data Dictionary



Issues / Anvik / #14

+ New issue

← Back to issues

Denne må byttes, ikke i tråd med krav

Unfollow

• Åpen • • Feil •

November 3, 2016  
October 21, 2016

Assigned to:

Requested by:



Håvar...  
Dag Fjeld Edva...

ARK x

sdfs sd

Dag Fjeld Edvardsen 5 months ago

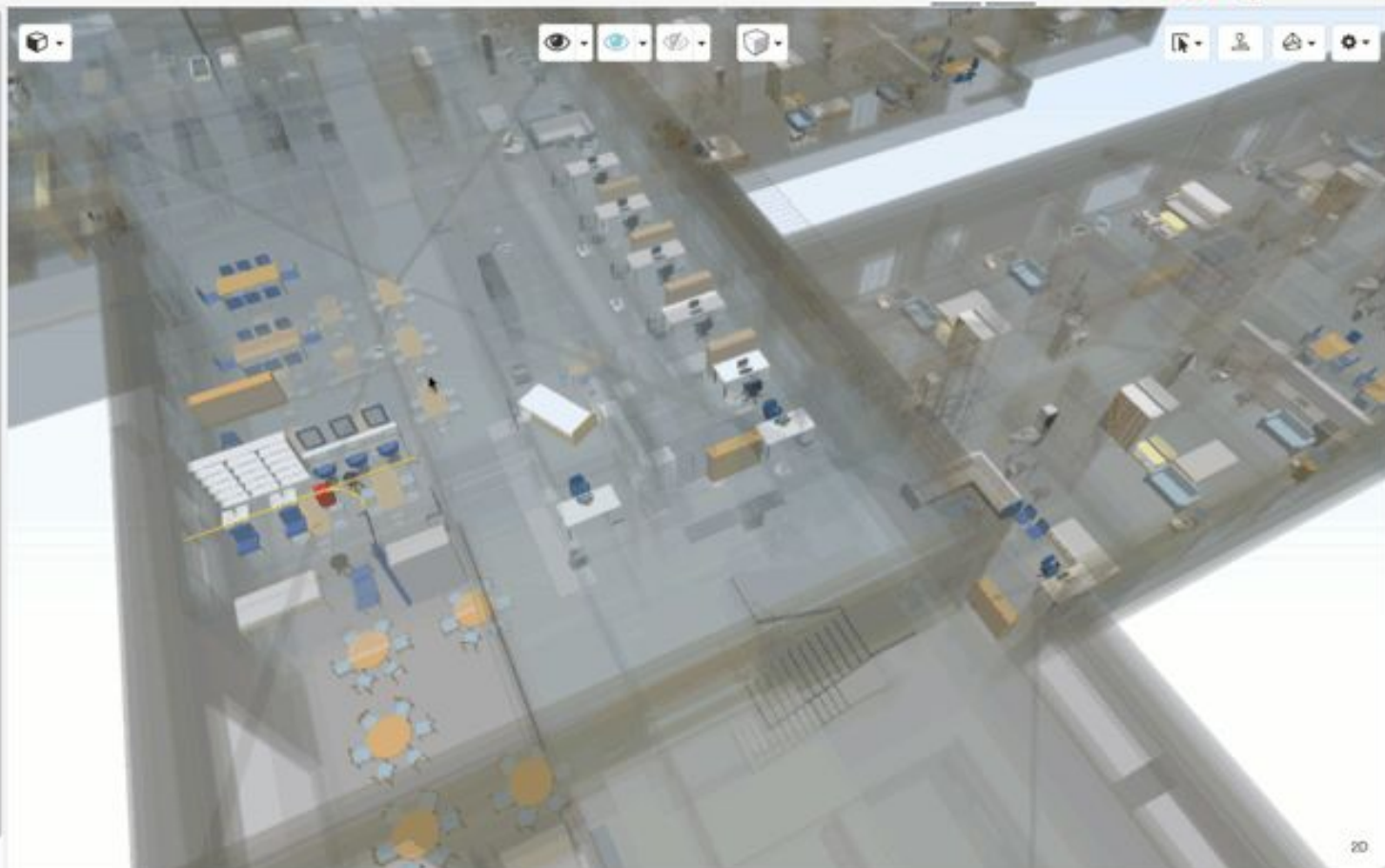


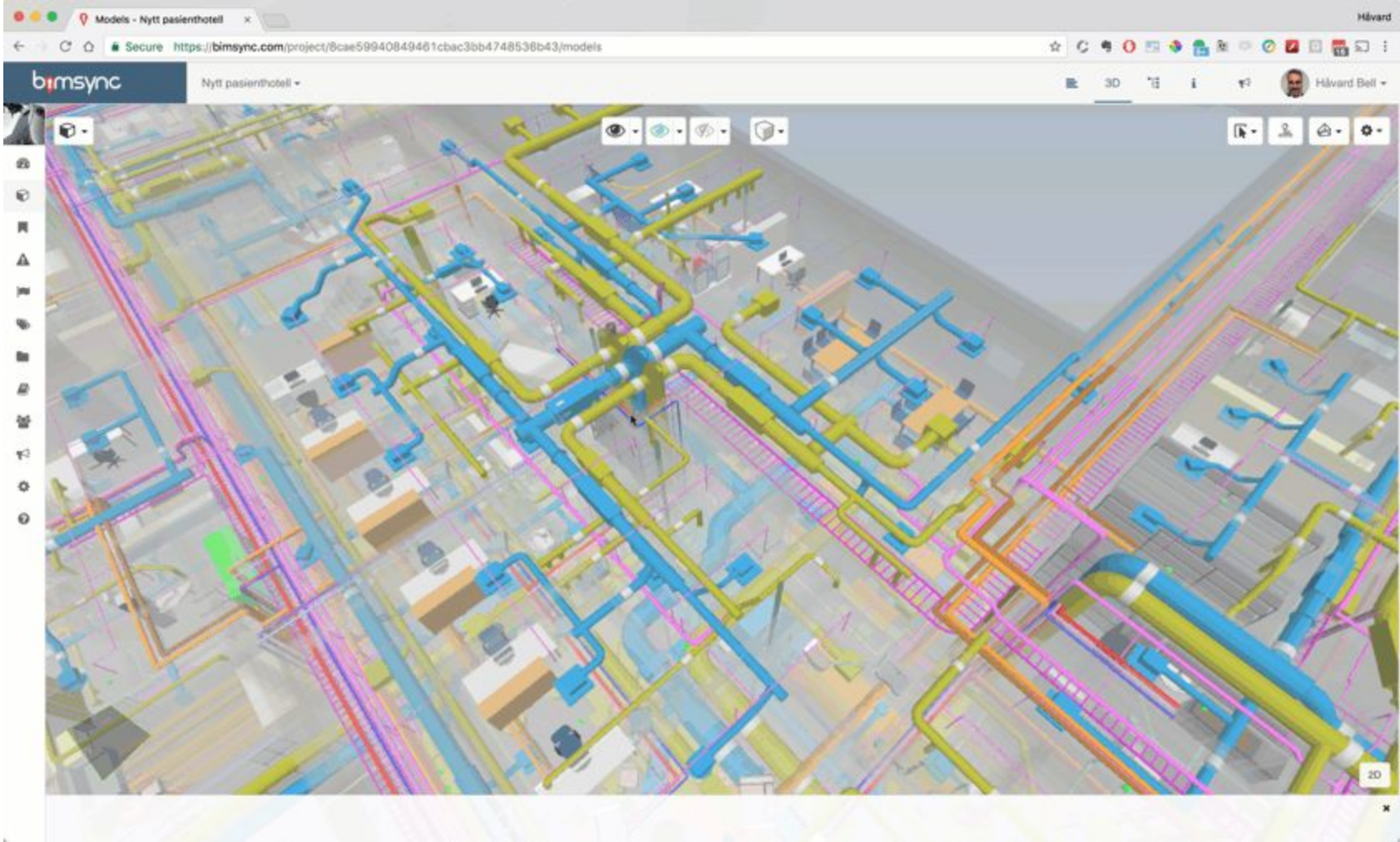
Kommentar!!

+ Write a comment ...

Submit

B - Beam - Stål 50 x 50 - NOTDEFINED







Documents

Secure <https://bimsync.com/project/8cae59940849461cbac3bb4748536b43/documents/69df05962b4146adbb31f2d67bea...>

bimsync

Nytt pasienthotell

Documents

Upload document

AllBacklink

Select

/

8

Links to BIM

☐ Linked (5)

☐ Unlinked (9)

Close

Administration

Background

FM Documents

Public

Reports

☐ 2016-09-03 10.17.11

3

i

☐ 2\_OSLO\_Bygg\_30\_min\_okt\_2013

137

i

☐ 5\_denkloketegning\_2013\_Singa...

135

i

3D

2D

View

2D

3D

Isometric

Hand

Pin

Share

Settings

3D Model

2D Drawing

2D

Close

Search...  

#### Status

- ☒ All (49)  
☐ All open (44)  
☐ Open (44)  
☐ Closed (5)  
☐ Resolved (0)  
☐ Proposed (0)

#### Type

- ☐ Error (33)  
☐ Warning (5)  
☐ Info (11)  
☐ Unknown (0)  
☐ Spennende (0)

#### Due date

- ☐ Overdue (0)  
☐ Less than a day (0)  
☐ Less than a week (0)  
☐ Less than two weeks (0)  
☐ Less than a month (0)  
☐ All with a due date (0)  
☐ No due date (49)

#### Assigned to

- ☐ Assigned to me (5)  
☐ Unassigned (20)  
☐ Anders Hjellvik (0)  
☐ Anniken Strand (1)  
☐ ARK (5)  
☐ Dag Fjeld Edvardsen (13)  
☐ Jan Erik Askjellrud (1)  
☐ Jon Anders Sollien (0)  
☐ Kristian Vedvik Holm (0)  
☐ Lars Bjørkhaug (3)  
☐ Ole Jørgen Karud (1)  
☐ RIB (0)

49 hits

« Previous 1 2 3 4 5 Next »

☐ 0 of 49 issues selected.

   Sort ▾

#### ☐ Sjekkliste

#63

☒ Open ☒ Error

Not assigned

Created by Håvard Bell

Updated  20 days ago.  2 comments





#### ☐ Problem.

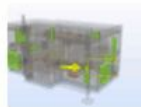
#62

☒ Open ☒ Error

Not assigned

Created by Håvard Bell

Updated  a month ago.  1 comment





#### ☐ Damaged lamp

#61

☒ Open ☒ Error

Assigned to ARK

Created by Håvard Bell

Updated  a month ago.  2 comments



#### ☐ I dont need this

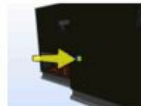
#60

☒ Open ☒ Error

Not assigned

Created by Dag Fjeld Edvardsen

Updated  2 months ago.  1 comment





#### ☐ Test 2

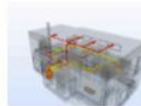
#59

☒ Open ☒ Error  damage

Not assigned

Created by Lars Bjørkhaug

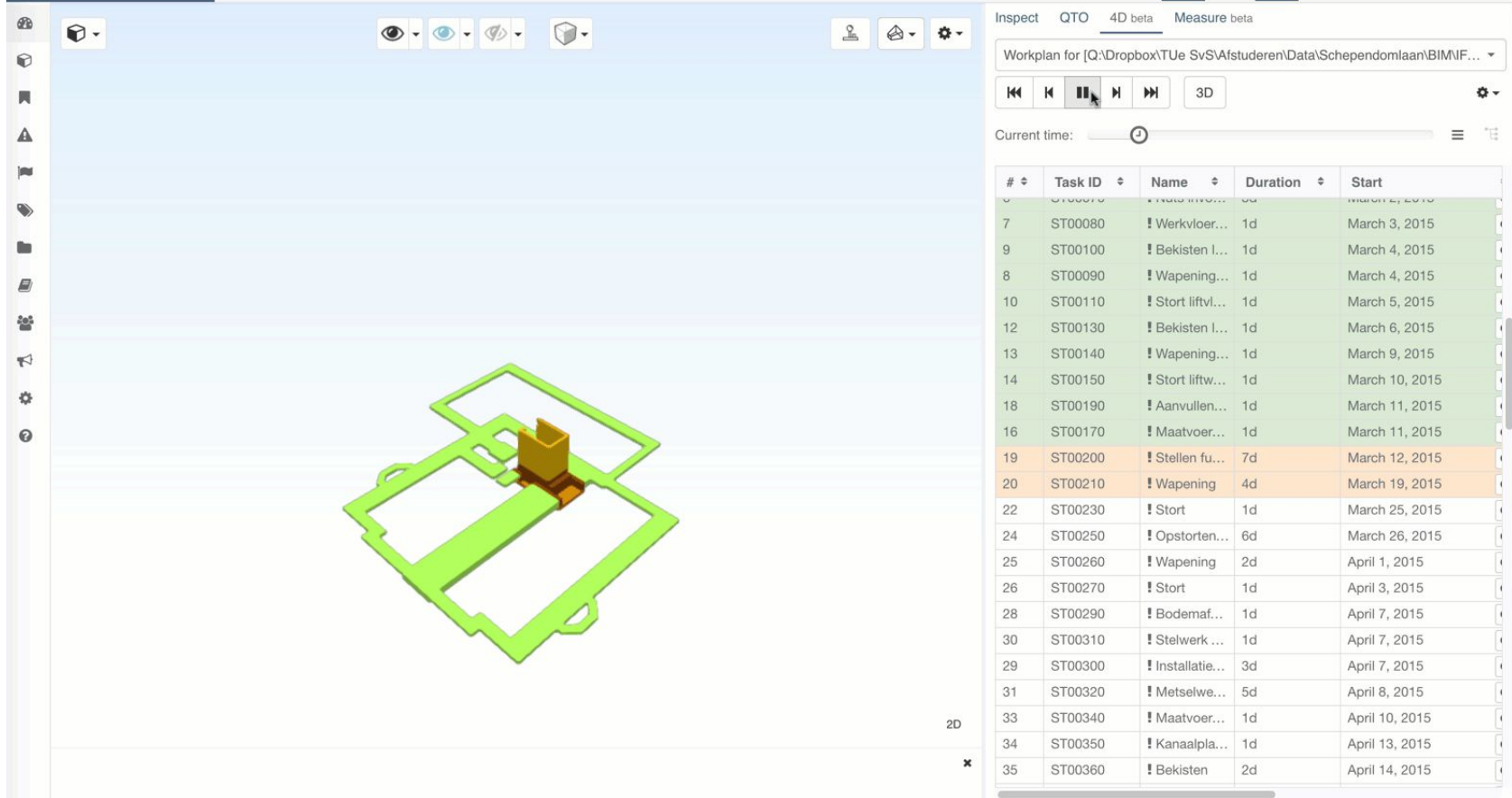
Updated  2 months ago.  1 comment



#### ☐ Testing translucency when creating new issue from viewermode

#58

☒ Open ☒ Error



Flytt langs et plan

x y z ← →

Snu objekt

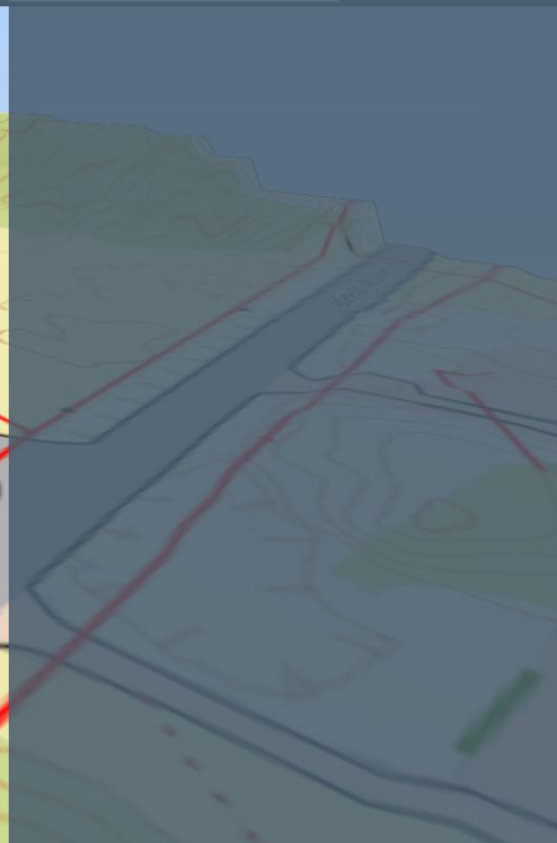
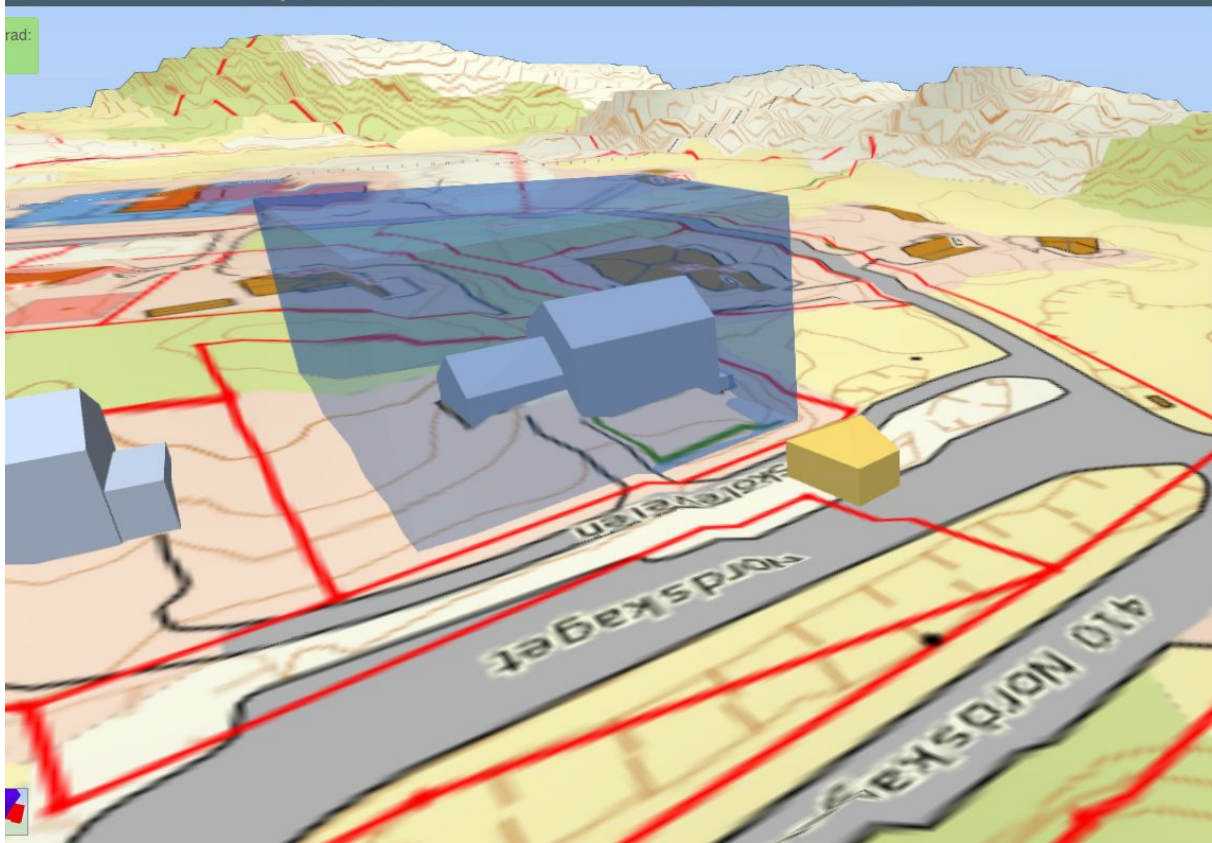


Ortografisk visning



Info

Bokmerker





Color by

Temperature ▼

- Below min
- OK
- Above max
- No data



Plan U1

1. Etasje

Teknisk etasje

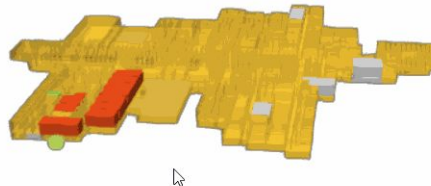
2. Etasje

3. Etasje

☐ Show all

☒ Rooms only

☐ Hide rooms

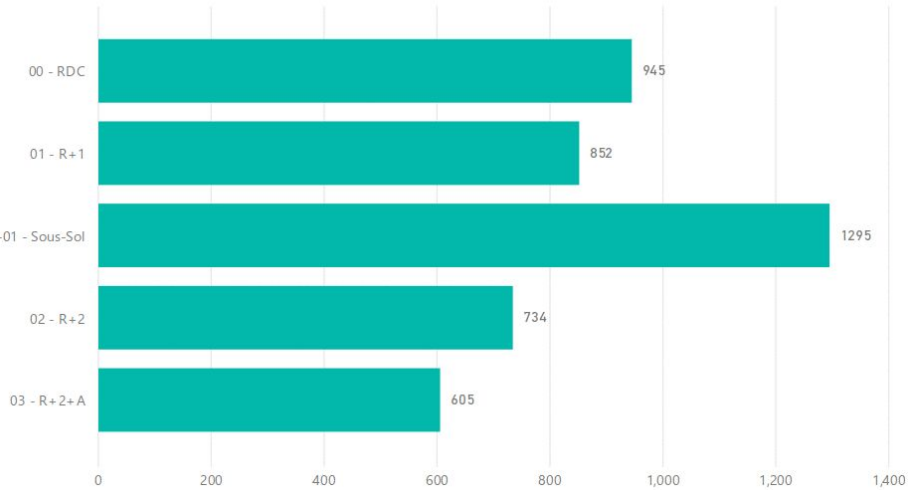


 Bimsync

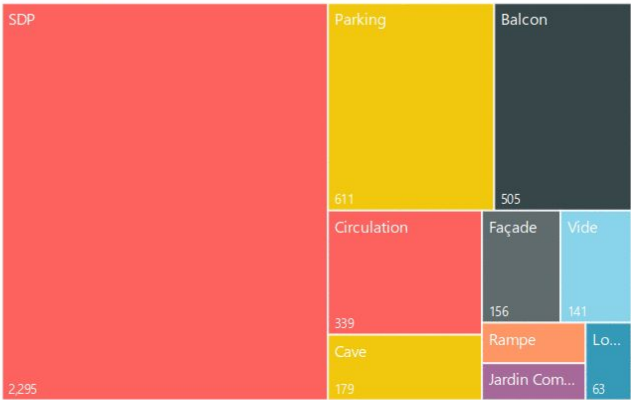
 Catenda

# Surfaces

Surfaces par étages (m²)



Types de surface (m²)



Dernière mise à jour le:

9/6/2017 10:24:17 AM

Model.name

ARC

Display

Revision N°3 du 8/31/2017 8:22:23 PM





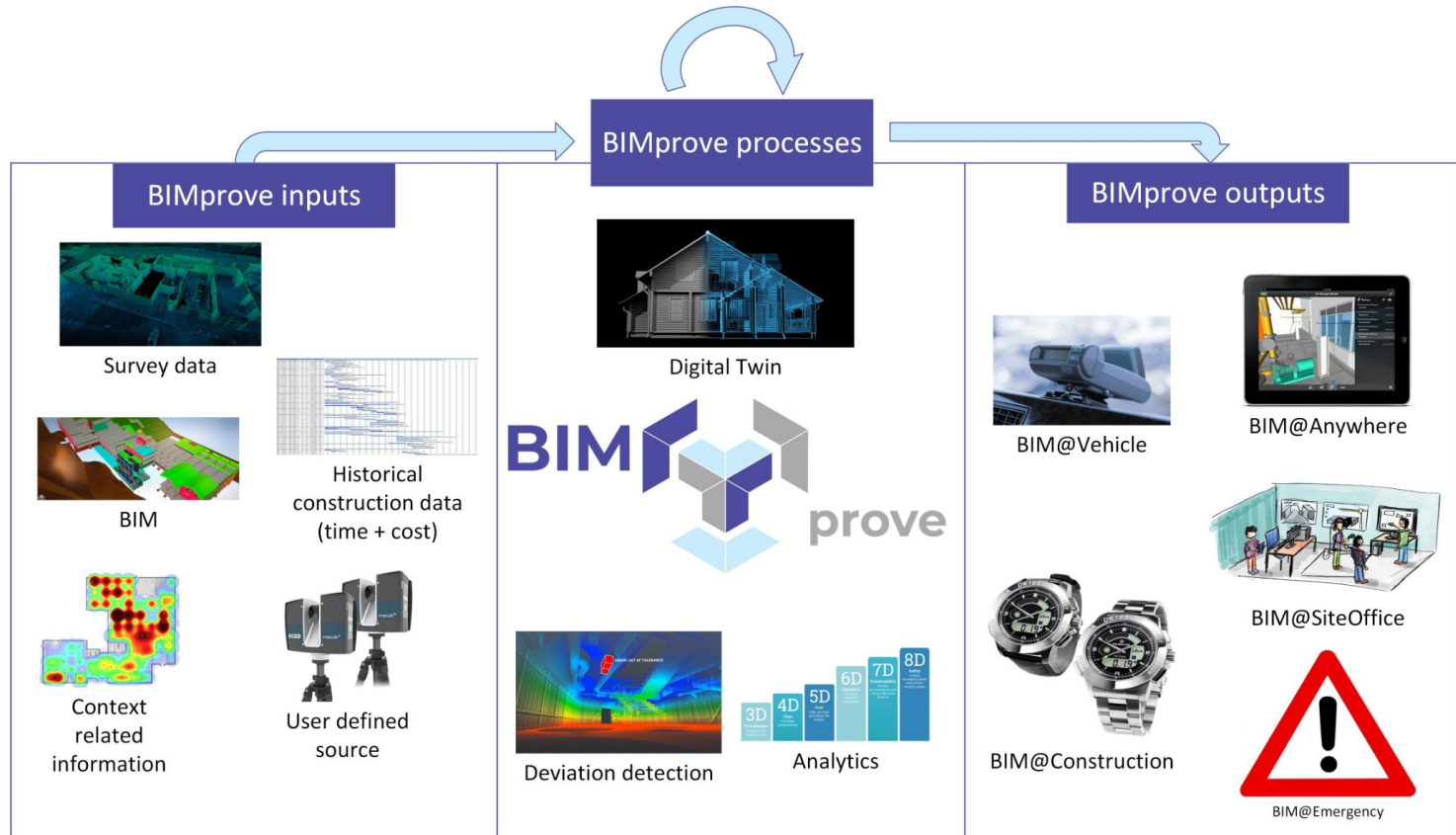


Messier 45  
aka Seven Sisters  
aka Pleiades

EU 2020 project,  
Catenda is a partner

**BIMprove** - H2020 Project. Catenda is a partner. <https://www.bimprove-h2020.eu>

Goal: Improve safety and efficiency using BIM, robots/drones, scanning, sensors, Digital Twins





# Catenda and open standards

In buildingSMART international, part of Developing bodies for

- IFC (“file format for open BIM”)
- BCF (“Widely used open BIM supporting task-collaboration”)
- bSDD (“Semantics”)

In Norway, part of several committees including

- NS8360 (Standard for Object Libraries in construction).

# Thank you!

Drammensveien 288 – 0283 Oslo, Norway

post@catenda.no – +47 403 30 101 – [www.catenda.no](http://www.catenda.no)

